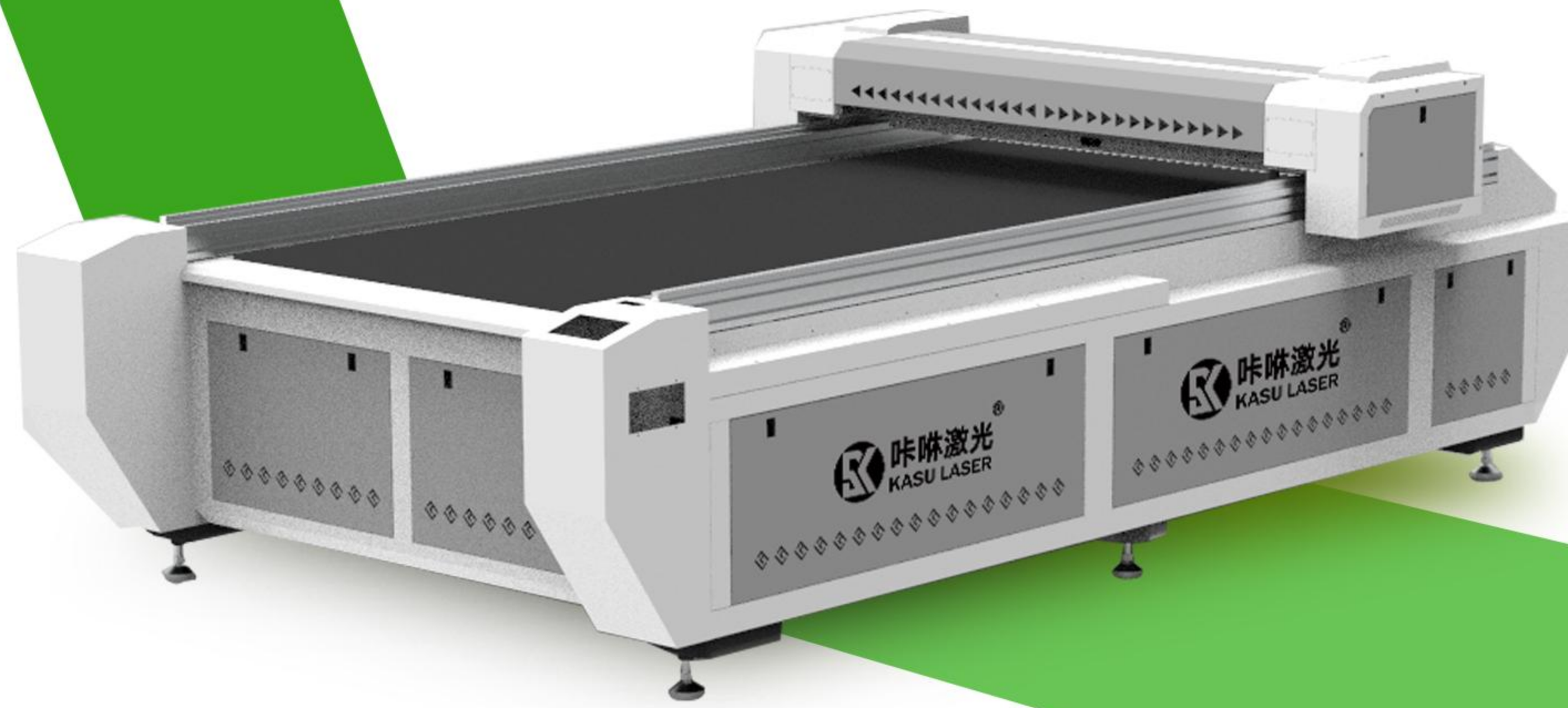




WATCH VIDEO

K1325-F1

High Precision Flatbed Laser Cutter



INTRODUCTION

The beauty of Co2 laser cutting is that it is incredibly versatile with suitable for different types of materials. And the K1325-F1 High Precision 4 x 8 Flatbed Laser Cutter is one of the most popular large Co2 laser cutting machine models.

KASU Laser's flatbed laser cutter and engraver K1325-F1 can cut and engrave on non-metal materials like acrylic, plastic, wood, plywood, MDF, paper, etc. with super high precision and speed.

Effective Working Area:

1300*2500MM

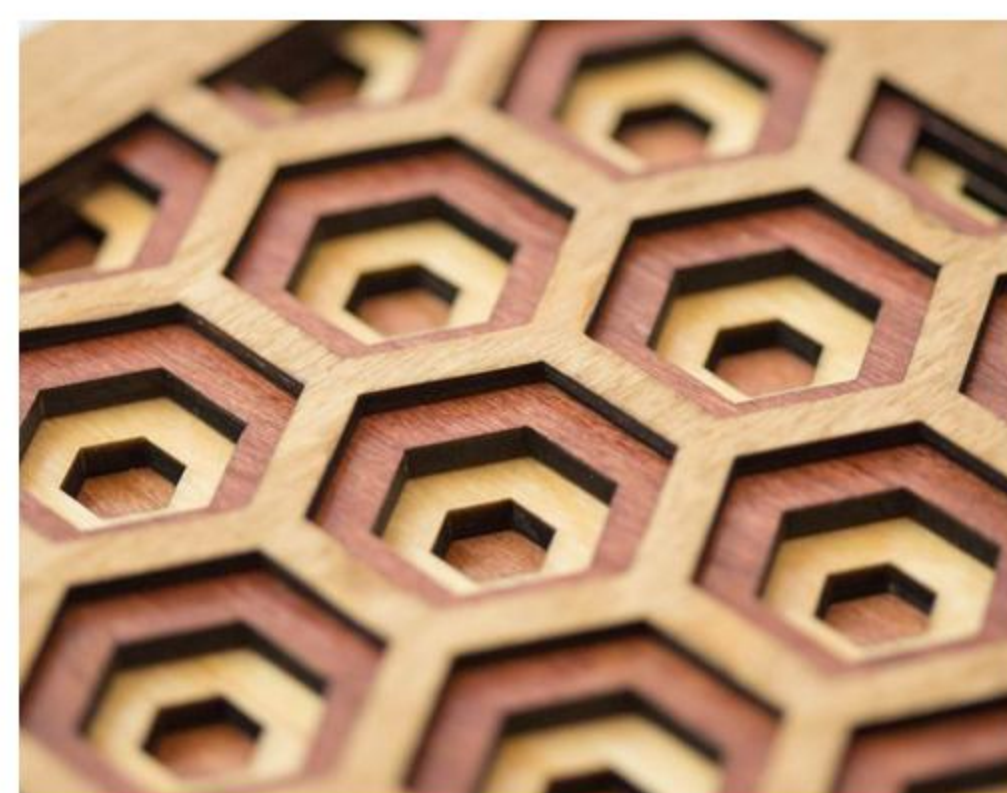
Machine Size: 1850*3500*1120MM

It has been widely applied in advertising and signage, art and craft, toy and decorations, etc. Super low initial investment and low maintenance cost make it ideal for individual startups and industrial applications.

APPLICATIONS



Acrylic



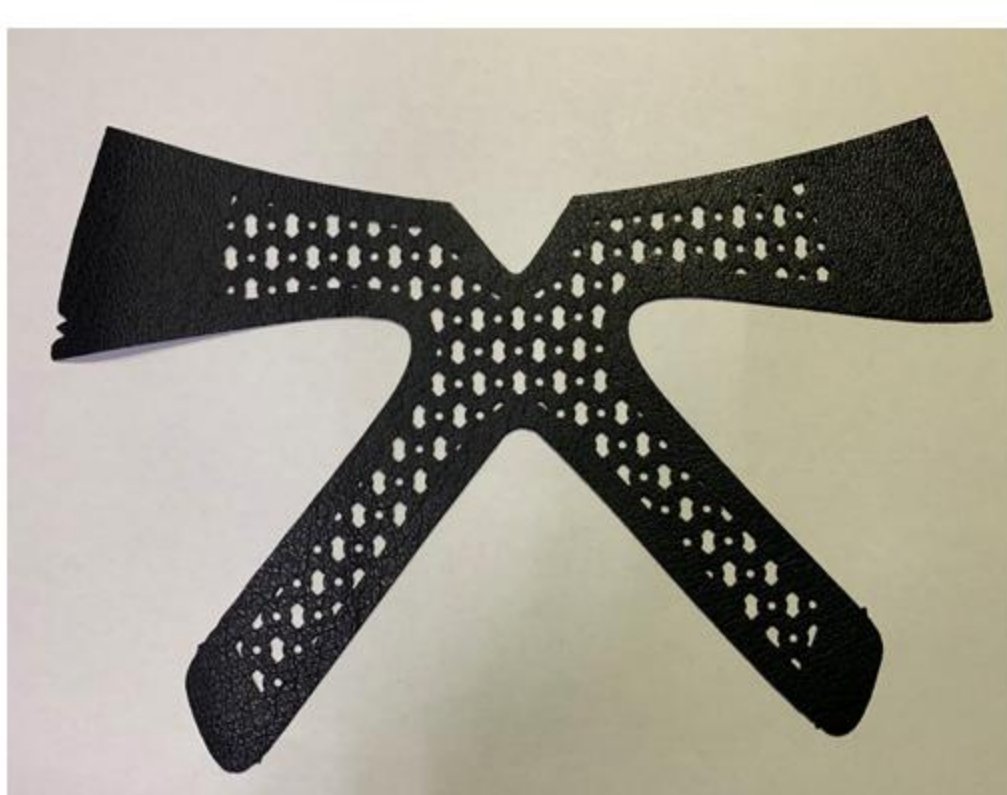
Wood



Plywood



Plastic



PU Leather



Poster

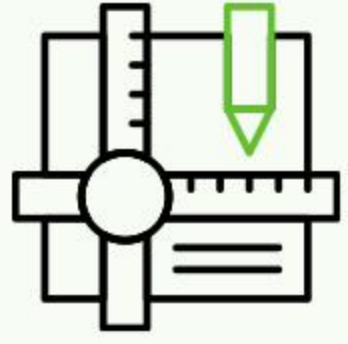


KT Board

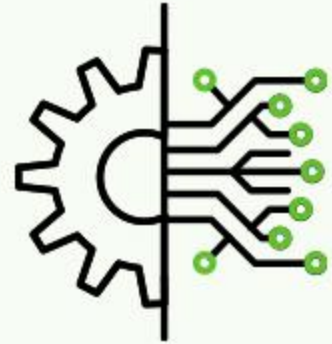


Fabric

■ KEY FEATURES



High Accuracy and Precision Cuts



Powerful Control Software Meet Different Industry Needs



Multi Laser Functions



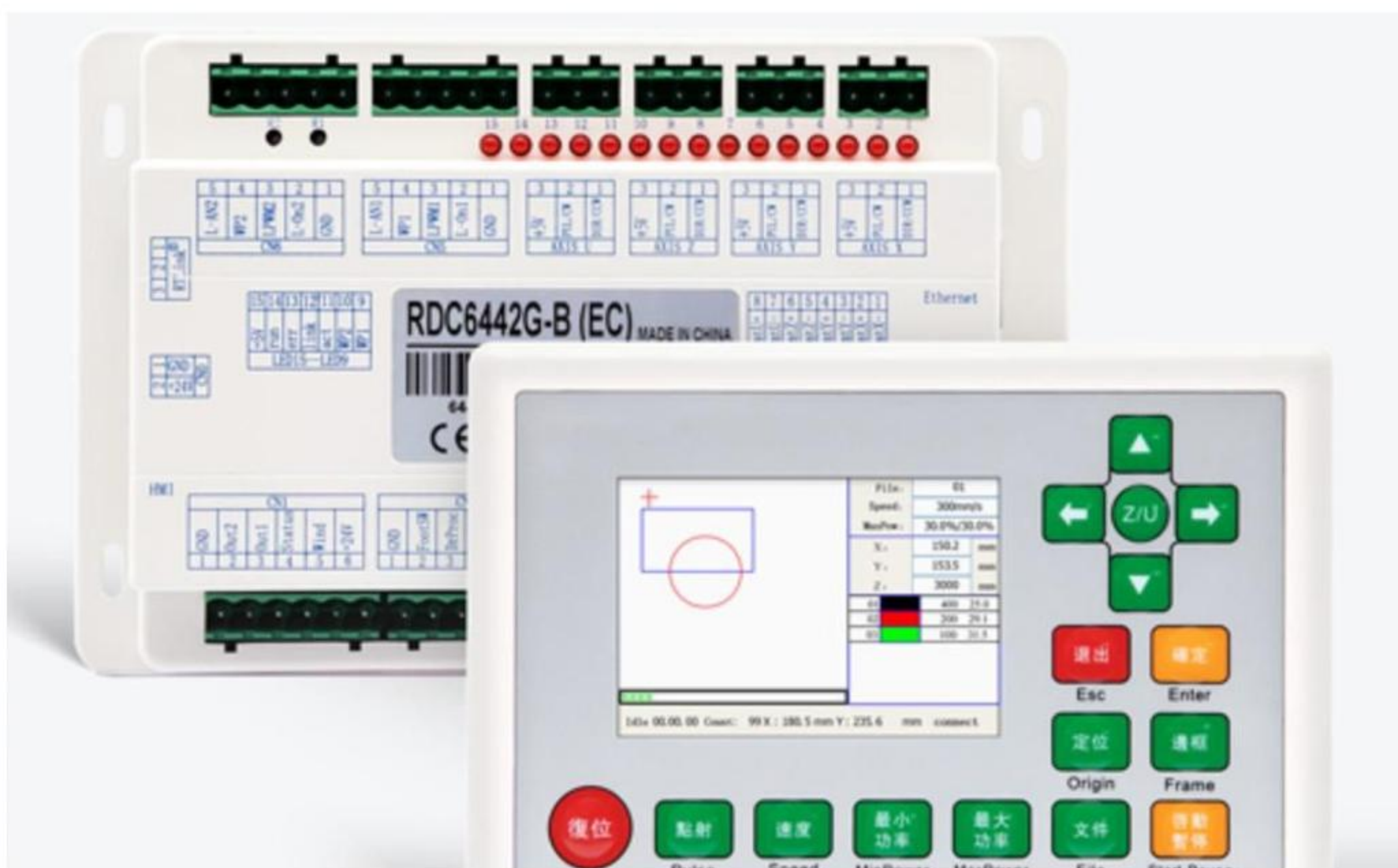
Computer-Aided Manufacturing



Bigger Working Area, Less Material Loss

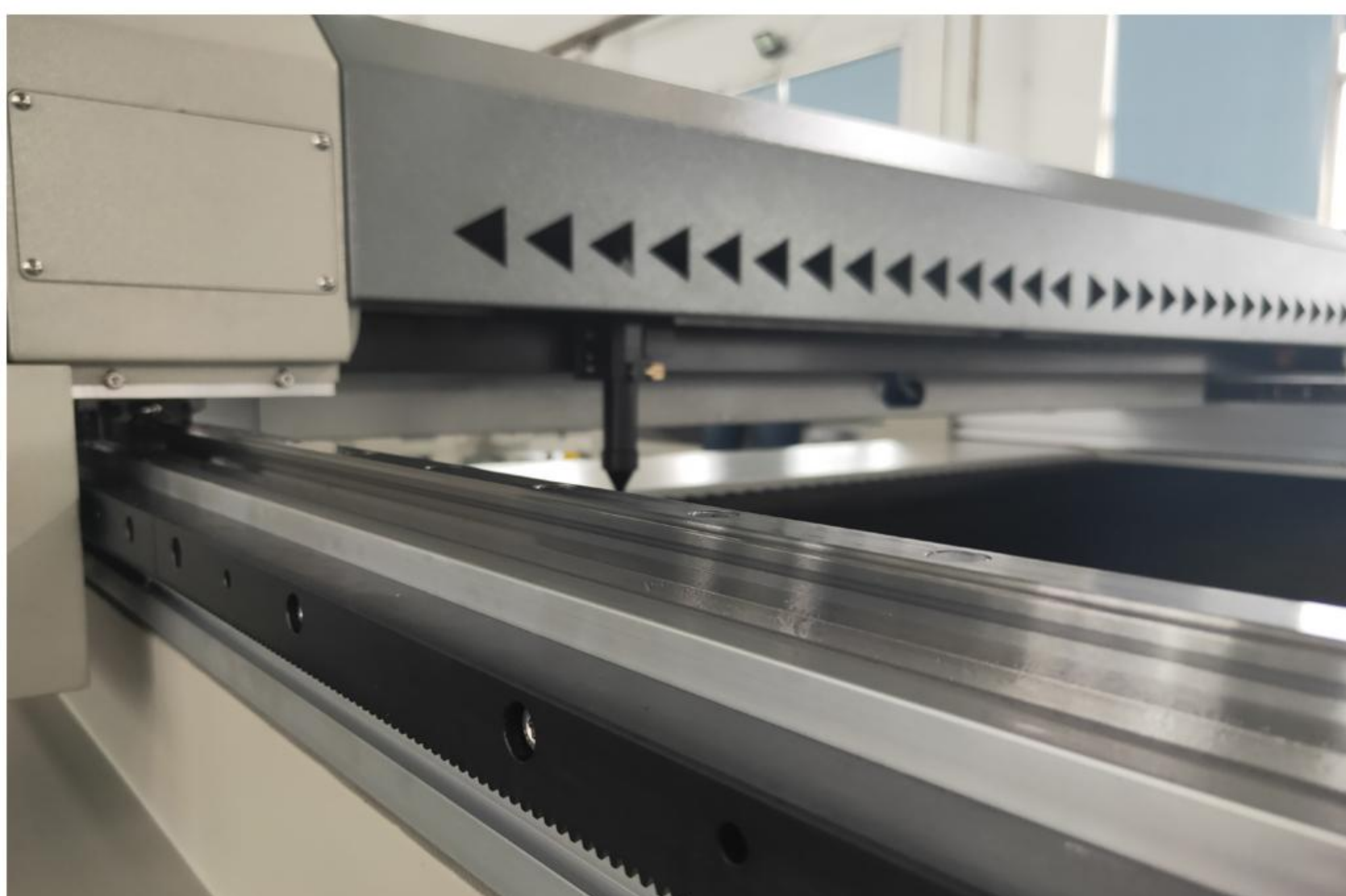
■ Smart Laser Control Software

While using KASU K1325-F1 laser cutter, only CAD design files are necessary, and you can design at your wish. The smart laser control software can make the whole cutting and engraving process highly automatic. And the larger working area allows you to do design and layout on the entire sheet board and minimize your material loss.

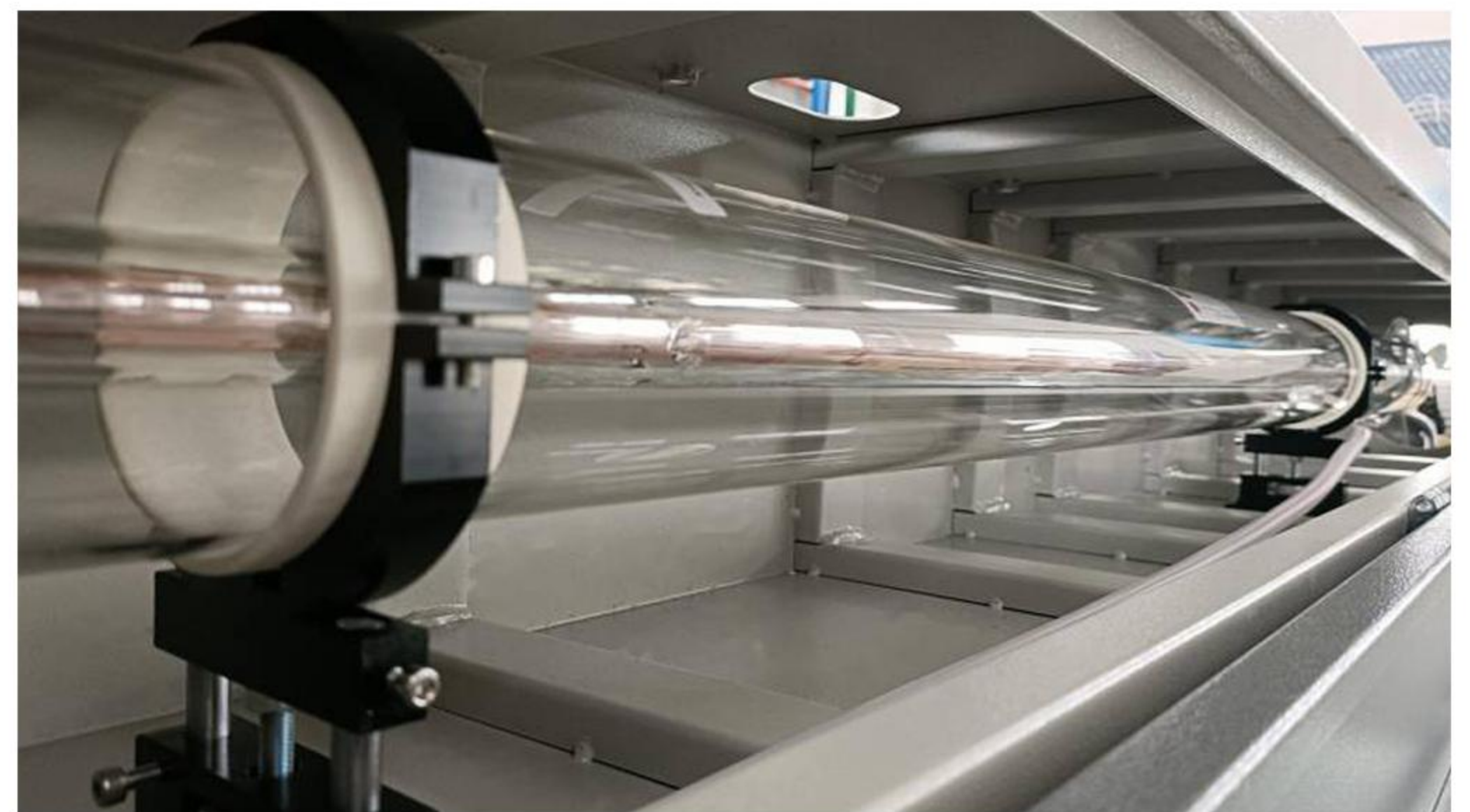


■ Reinforced Hardware Module

KASU laser's reinforced hardware module, linear guide rail, and rack and pinion motion system make our 4 x 8 laser cutter achieve an impressive level of precision and durability. This level of accuracy is as high as +/- 0.1mm, which is one of the best you'll get from the flatbed 1325 laser cutter.

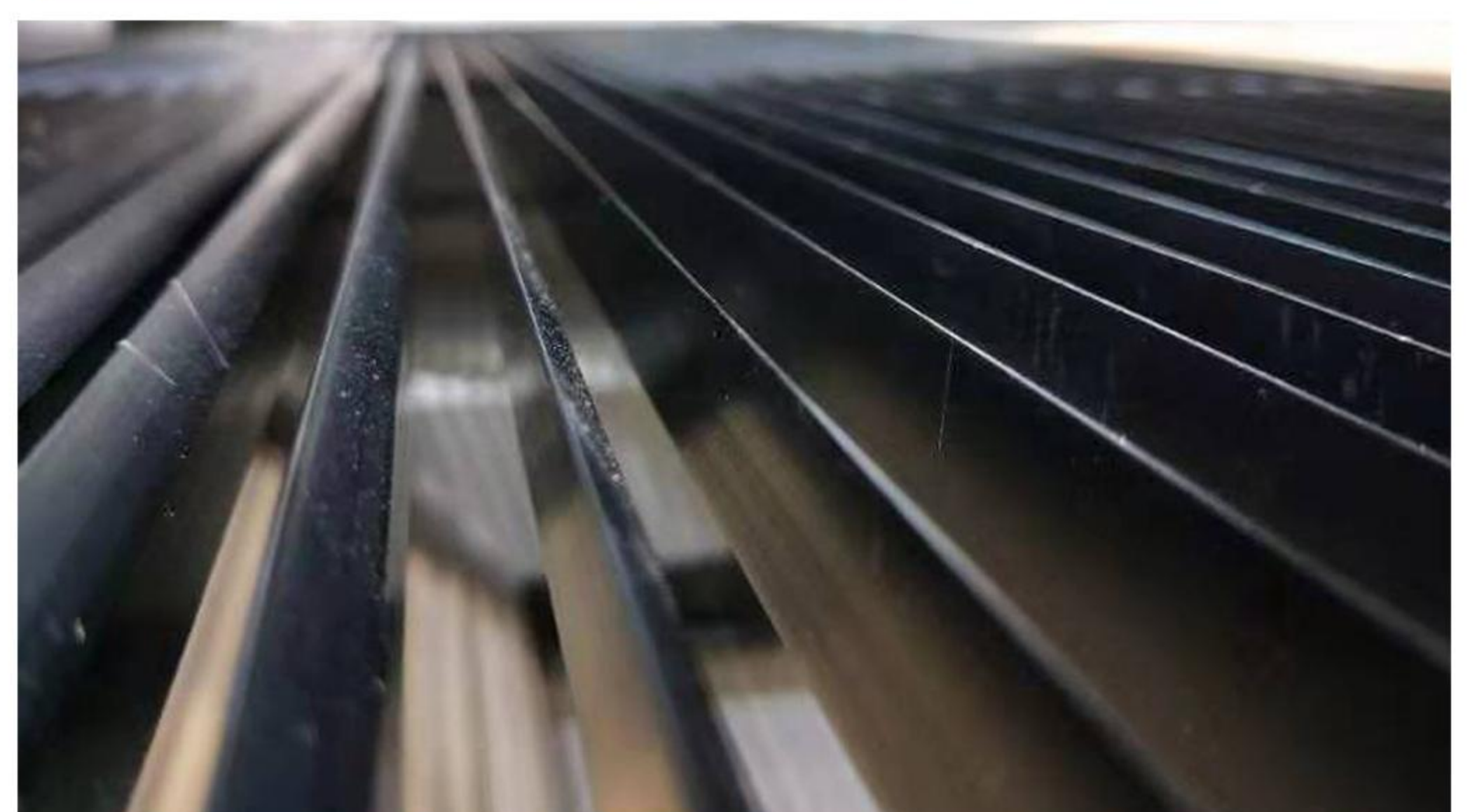


■ Sealed Glass Co2 Laser Tube



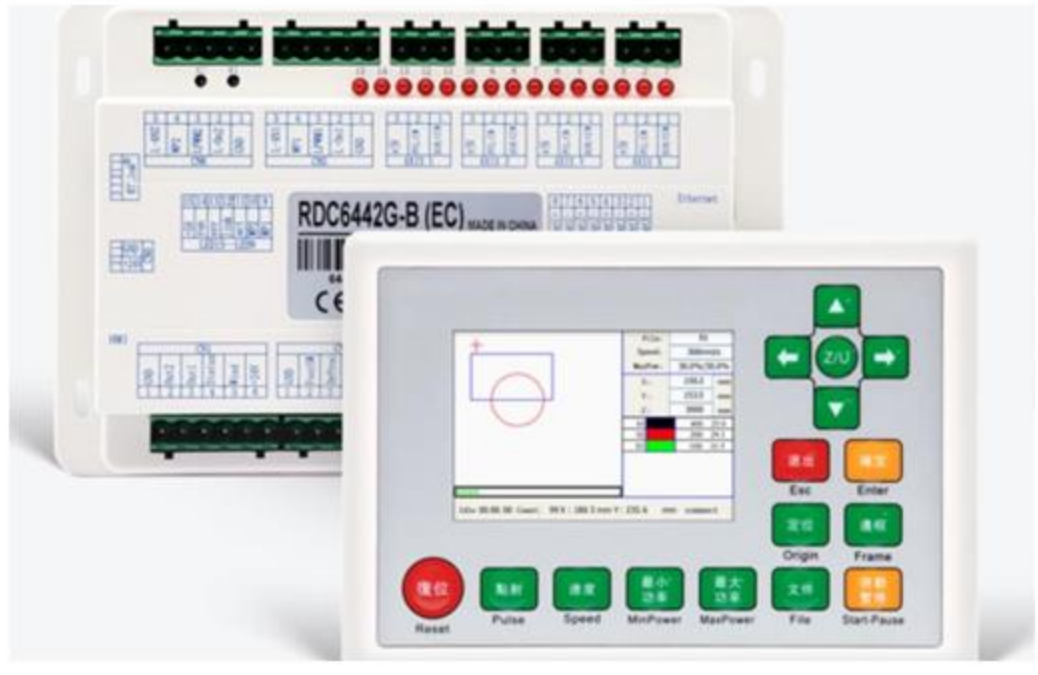
Sealed glass Co2 laser tube is one of the consumables for Co2 laser cutting machine. But the Made-In-China Co2 glass tube's ROI is super high. One 100W laser tube can last for over 2 years based on 8 working hours per day. And you only need to pay about hundreds of US Dollars to replace one.

■ Flexible Blade Knife Table



K1325-F1 laser cutter with blade knife table can give enough support to the plate and thick materials. And it has the least contact point with the materials, and the laser reflection point of the material cutting edge will be less, and a better cutting edge effect will be generated. And the knife blades are not fixed on the table, it can be removed at any time according to your actual situation.

■ TOP QUALITY SPARE PARTS



Control Card



Cutting Head



Glass Tube



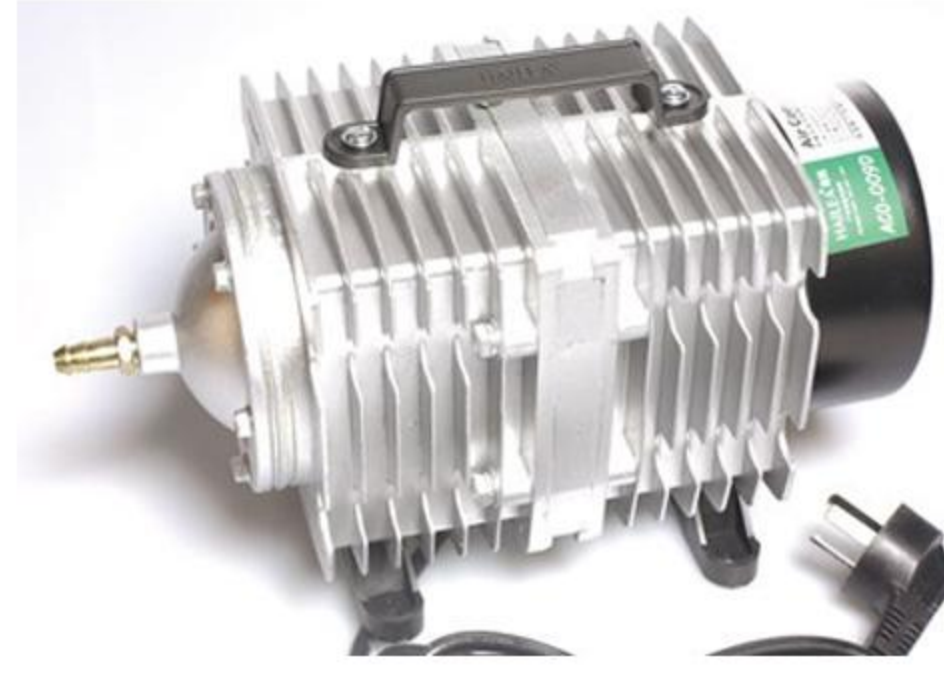
Laser Power



AC Water Chiller



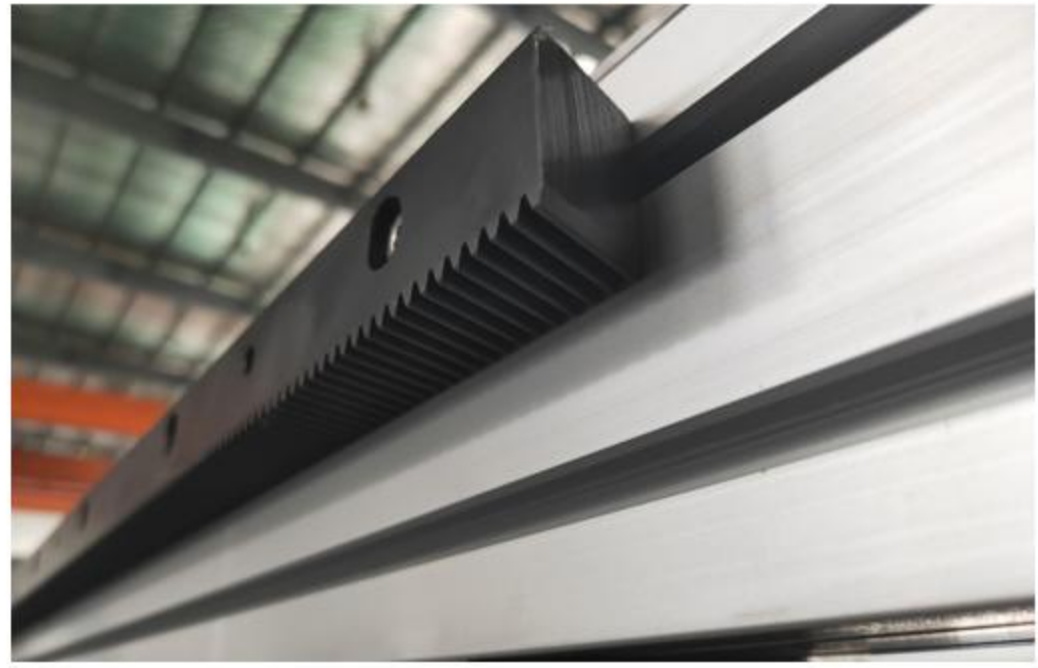
Exhausting Fan



Air Pump



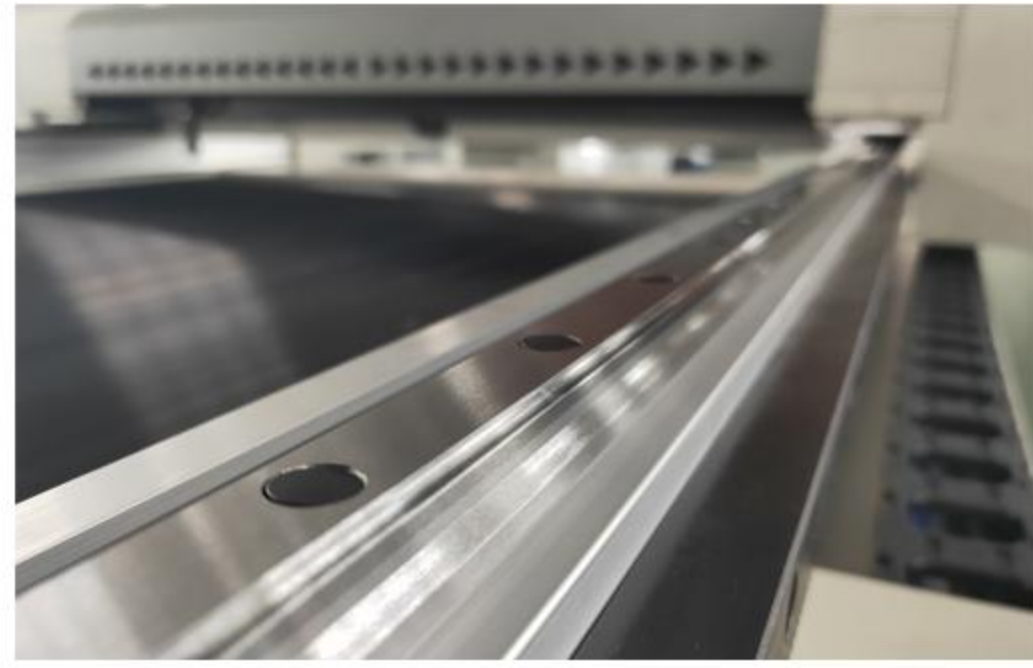
Lense



Rack and Pinion Motion System



Stepping Motor



Guide Rail



Spare Parts Tool Kit

To keep your laser cutter running for years, we provide you high quality spare parts verified by our QC process. And we offer replacing spare parts to our clients at COST PRICE just to ensure you have the best using experience and lowest maintenance cost.

■ SAFETY DESIGN

Following the safety standards, we try everything to make a reliable machine to protect both your operator and your laser machine.



Strong and Sturdy Structure



Alarm Lamp



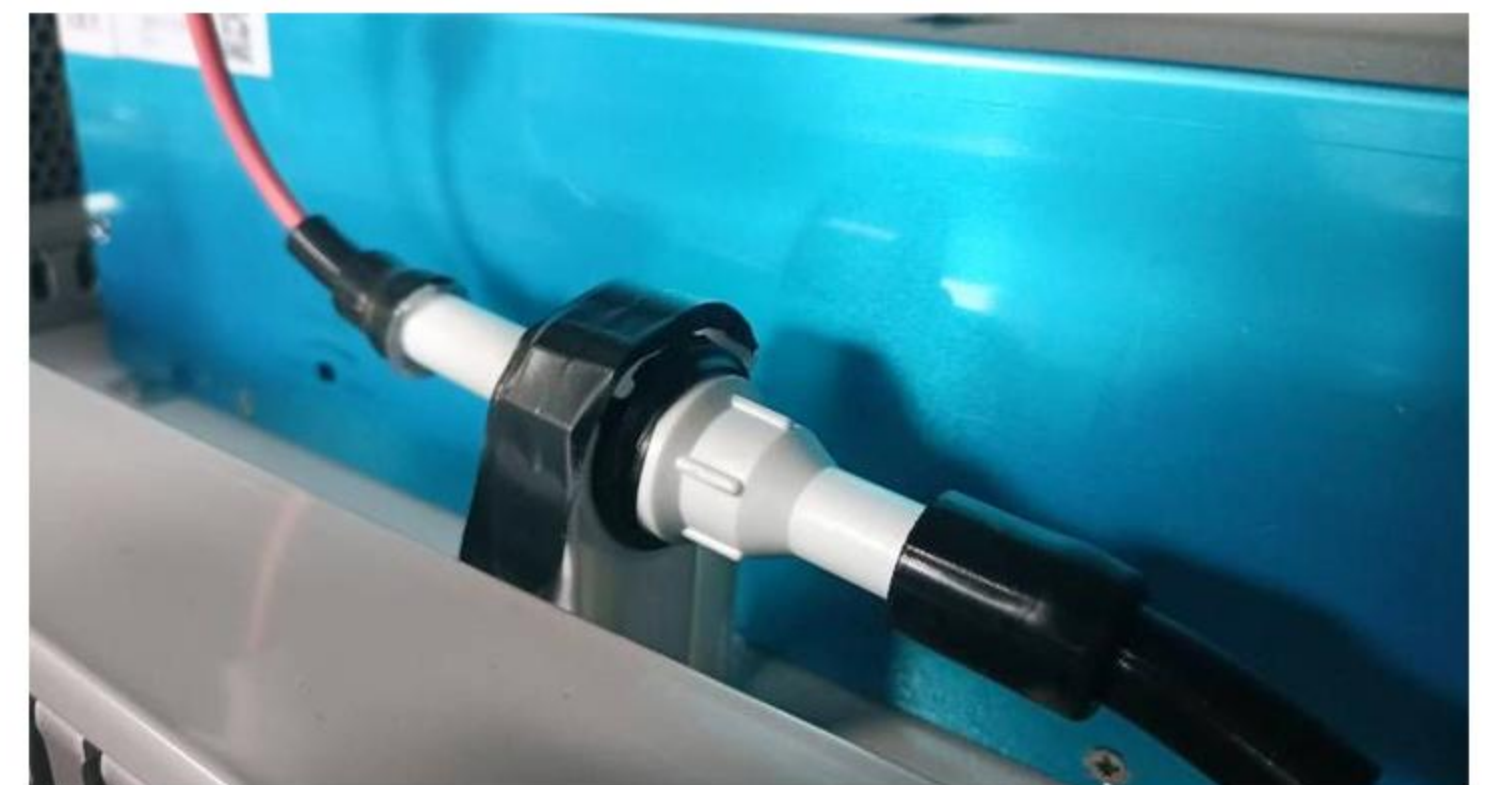
Emergency Button



Strong Drag Chain



High-Voltage Wire Insulation



Insulation Support Frame



Notification Stickers

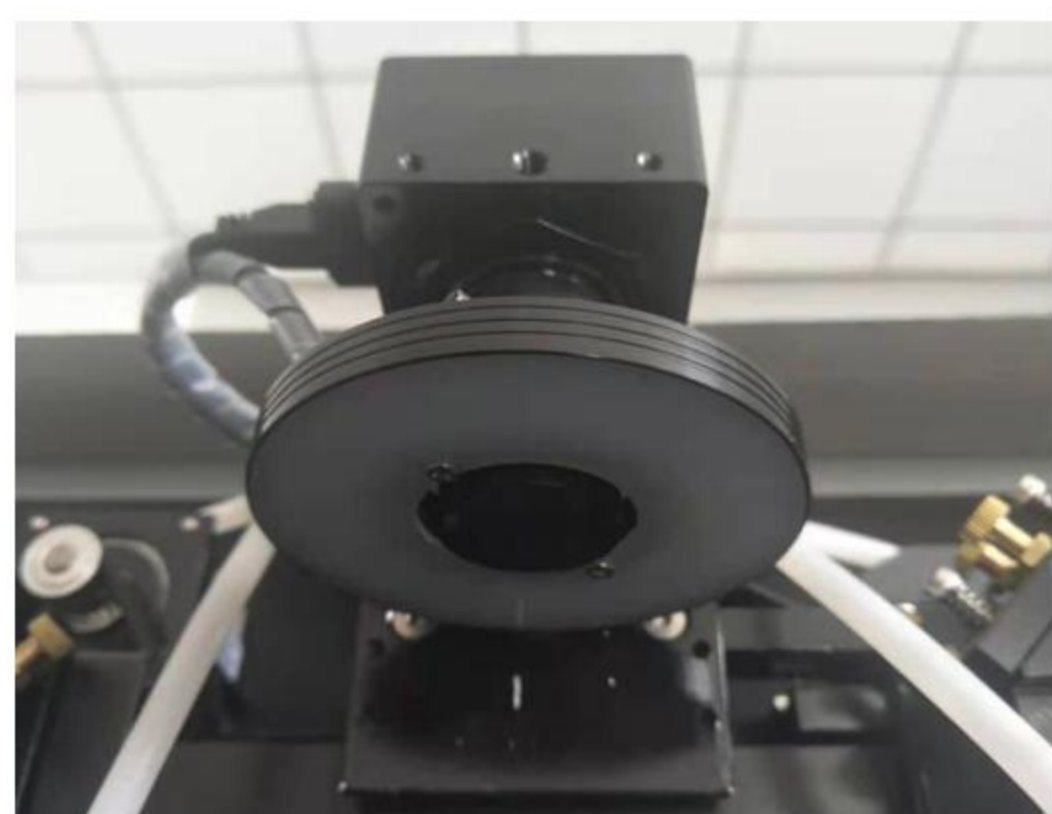


Wire Protection

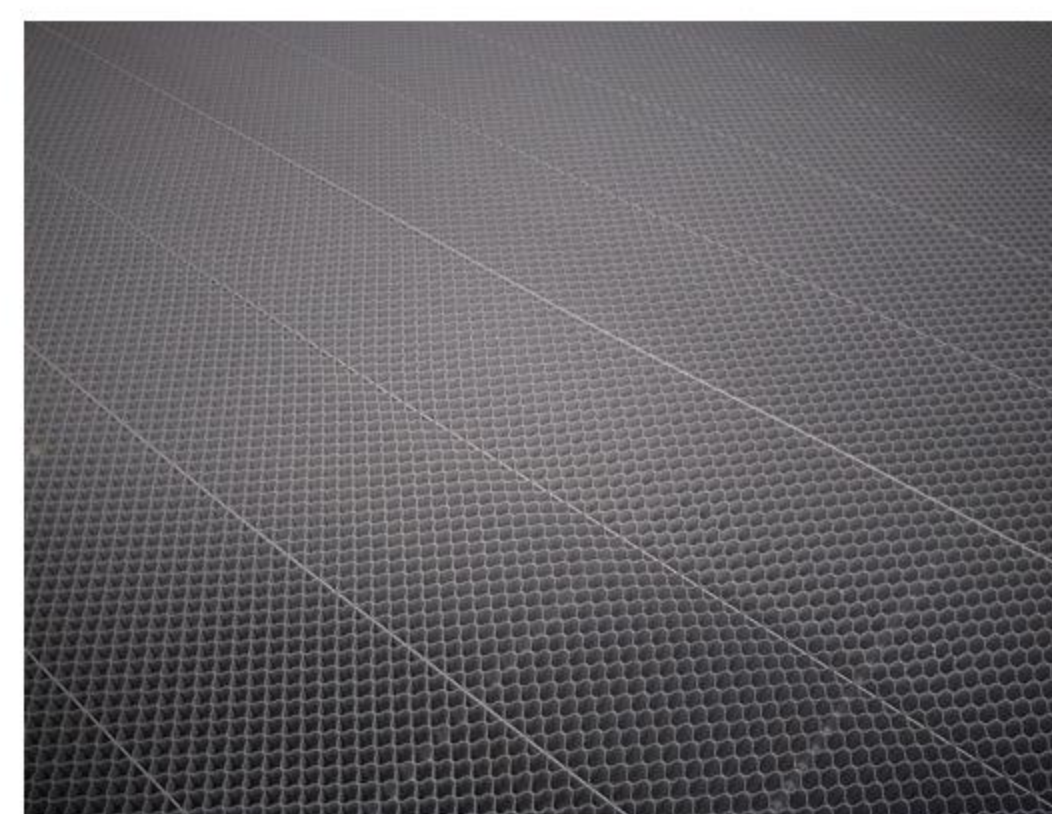


Connector Insulation

OPTIONAL DEVICES



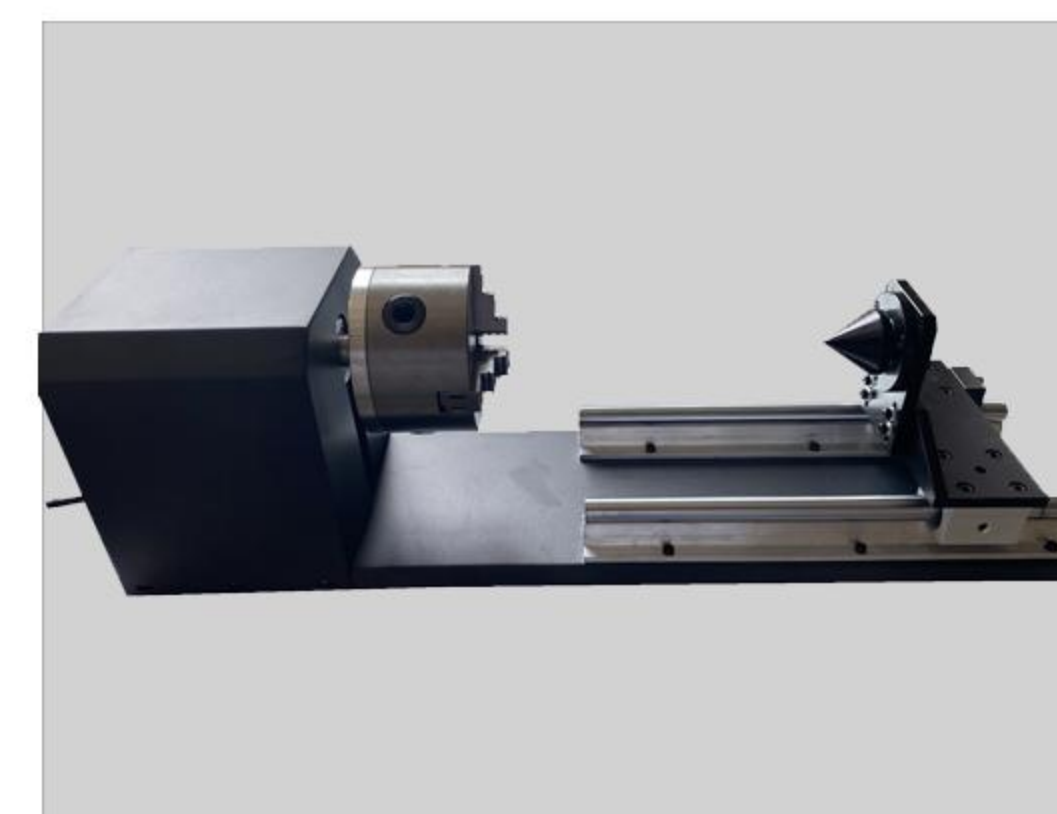
CCD Camera



Honeycomb Table



200W Laser Tube

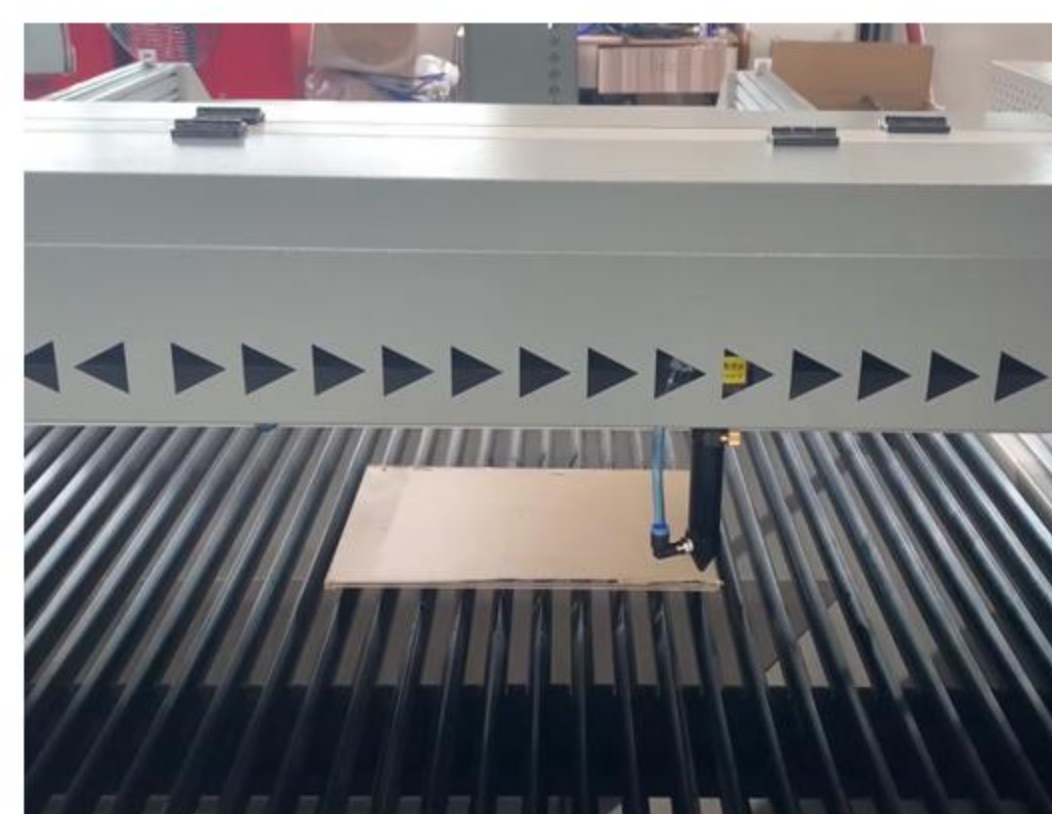


Rotary Device

MACHINE PARAMETERS

Working Area	1300MM*2500MM	Software	KASU
Laser Type	Glass CO2 Laser Tube	Working Speed	<1000 MM/S
Laser Power	80/100/130/150W/200W	Power Supply Requirements	AC220V±5% 50Hz/60Hz 1Phase
Heads of Laser	Single Head	Format Supported	AI\BMP\PLT\DXF\DST
Dimensions with Wood Package	2*3.6*1.32M	Positioning Accuracy	±0.1MM
Gross Weight	900KG	Operating Temperature	minus 10°C~45°C
Motion System	Hybrid Step-Servo Motor	Operating Humidity	5-95%
Cooling System	5000 Industrial Water Chiller	Total Power	<1.5KW (Excluding exhauster)

SUCCESSFUL STORIES



CONTACT US



WECHAT



WHATSAPP

Contact us now and get a live demo of how our digital cutting solutions help increase your cutting workshop productivity and efficiency.

✉ Email: kasu@kasulaser.com
 🌐 www.kasulaser.com / www.kasucutter.com
 🏢 Shanghai KASU Intelligent Technology Co., Ltd.

🏠 Suzhou KASU Intelligent Equipment Co., Ltd.
 📍 Factory: No. 20, Jiangnan Road, Taicang, Suzhou, Jiangsu, China